



— when you're grown up.

START

**BRUCE,
TOMMY:**



And when I grow up—



I will be smart e-nough to ans - wer all— the



quest-ions that you need— to know— the ans - wers to be-



fore you're grown up.——



And when I grow up— I will eat



— sweets ev-'ry day,— on the way— to work— and I—





— will go to bed — late ev - 'ry night. —

AMANDA, ERIC,
BRUCE, TOMMY:

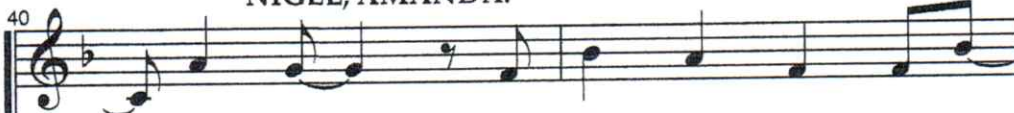


And I will wake up — when the sun



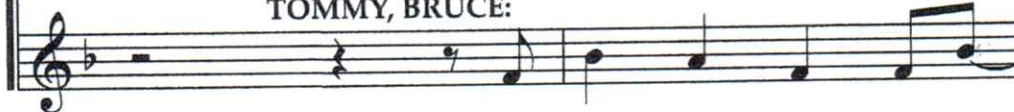
— comes up and I — will watch car - toons un - til my eyes

ALICE, ERIC, LAVENDER,
NIGEL, AMANDA:



— go square And I won't care cos I'll —

HORTENSIA,
TOMMY, BRUCE:



And I won't care cos I'll —



— be all — grown up — When I — grow



— be all — grown up — When I — grow



45

up. _____

up. _____

2

2

49

GROUP 1:

When I grow up, _____

GROUP 2:

When I grow up, _____

GROUP 3: ³

When I grow

52

I will be strong e-nough to car - ry all the

— I will be strong e-nough to car - ry all the

up, I will be strong e-nough to car - ry all the

